



**India Meteorological Department
(Ministry of Earth Sciences)**

BULLETIN NO. 14 (ARB/01/2023)

TIME OF ISSUE: 0250 HOURS IST

DATED: 08.06.2023

FROM: INDIA METEOROLOGICAL DEPARTMENT (FAX NO. 24643965/24699216/24623220)

**TO: CONTROL ROOM, NDM, MINISTRY OF HOME AFFAIRS (FAX.NO. 23093750)
CONTROL ROOM NDMA (FAX.NO. 26701729)**

CABINET SECRETARIAT (FAX.NO.23012284, 23018638)

PS TO HON'BLE MINISTER FOR S & T AND EARTH SCIENCES (FAX NO.23316745)

SECRETARY, MOES (FAX NO. 24629777)

H.Q. (INTEGRATED DEFENCE STAFF AND CDS) (FAX NO. 23005137/23005147)

DIRECTOR GENERAL, DOORDARSHAN (23385843)

DIRECTOR GENERAL, AIR (23421105, 23421219)

PIB MOES (FAX NO. 23389042)

UNI (FAX NO. 23355841)

D.G. NATIONAL DISASTER RESPONSE FORCE (NDRF) (FAX NO. 26105912, 2436 3260)

DIRECTOR, PUNCTUALITY, INDIAN RAILWAYS (FAX NO. 23388503)

CHIEF SECRETARY, KERALA (FAX NO. 0471-2327176)

ADMINISTRATOR, LAKSHADWEEP ISLANDS (FAX NO. 0413-262184)

CHIEF SECRETARY, TAMILNADU (FAX NO. 044-25672304)

CHIEF SECRETARY, GOA (FAX NO. 0832-2415201)

CHIEF SECRETARY, KARNATAKA (FAX NO. 080-22258913)

CHIEF SECRETARY, MAHARASHTRA (FAX NO. 022- 22028594)

CHIEF SECRETARY, GUJARAT (FAX NO. 079-23250305)

CHIEF SECRETARY, DAMAN & DIU (FAX NO. 0260-2230775)

CHIEF SECRETARY, DADRA & NAGAR HAVELI (FAX NO. 0260-2645466)

Sub: Very Severe Cyclonic Storm “Biparjoy” (pronounced as “Biporjoy”) over eastcentral Arabian Sea

The very severe cyclonic storm “Biparjoy” (pronounced as “Biporjoy”) over eastcentral Arabian Sea moved nearly north-northwestwards with a speed of 7 kmph during past 6 hours and lay centered at 2330 hours IST of 07th June, 2023 over the same region near latitude 13.6°N and longitude 66.0 °E, about 870 km west-southwest of Goa, 930 km southwest of Mumbai, 970 km south-southwest of Porbandar and 1260 km south of Karachi.

It would intensify further gradually during next 48 hours and move nearly north-northwestwards during next 3 days.

Forecast track and intensity are given below:

Date/Time(IST)	Position (Lat. °N/ long. °E)	Maximum sustained surface wind speed (Kmph)	Category of cyclonic disturbance
07.06.23/2330	13.6/66.0	125-135 gusting to 150	Very Severe Cyclonic Storm
08.06.23/0530	13.9/65.9	130-140 gusting to 155	Very Severe Cyclonic Storm
08.06.23/1130	14.2/65.8	135-145 gusting to 160	Very Severe Cyclonic Storm
08.06.23/1730	14.5/65.7	135-145 gusting to 160	Very Severe Cyclonic Storm
08.06.23/2330	14.8/65.6	145-155 gusting to 170	Very Severe Cyclonic Storm
09.06.23/1130	15.5/65.3	145-155 gusting to 170	Very Severe Cyclonic Storm
09.06.23/2330	16.3/65.1	145-155 gusting to 170	Very Severe Cyclonic Storm
10.06.23/1130	17.0/65.0	145-155 gusting to 170	Very Severe Cyclonic Storm
10.06.23/2330	17.6/64.8	135-145 gusting to 160	Very Severe Cyclonic Storm
11.06.23/1130	18.3/64.6	135-145 gusting to 160	Very Severe Cyclonic Storm
11.06.23/2330	19.0/64.4	135-145 gusting to 160	Very Severe Cyclonic Storm
12.06.23/1130	19.6/64.2	130-140 gusting to 155	Very Severe Cyclonic Storm
12.06.23/2330	20.2/64.0	130-140 gusting to 155	Very Severe Cyclonic Storm

(i) Wind warning:

8th June: Gale wind speed reaching 125-135 kmph gusting to 150 kmph is prevailing over eastcentral Arabian Sea and adjoining areas of westcentral & south Arabian Sea. It is likely to increase and become 130-140 kmph gusting to 155 kmph over the same area from morning and it is likely to further increase and become 135-145 kmph gusting to 160 kmph from noon of 8th June over the same area.

Squally weather with wind speed reaching 35-45 kmph gusting to 55 kmph is likely along & off Karnataka-Goa-Maharashtra coasts.

9th June: Gale wind speed reaching 135-145 kmph gusting to 160 kmph is likely to prevail over central Arabian Sea.

Squally wind speed reaching 40-50 kmph gusting to 60 kmph is likely over adjoining areas of South Arabian Sea. Squally weather with wind speed reaching 35-45 kmph gusting to 55 kmph is likely along & off Karnataka-Goa-Maharashtra coasts.

10th June: Gale wind speed reaching 145-155 kmph gusting to 170 kmph is likely to prevail over central Arabian Sea.

Squally wind speed reaching 40-50 kmph gusting to 60 kmph is likely over adjoining areas of north Arabian Sea. Squally weather with wind speed reaching 35-45 kmph gusting to 55 kmph is likely along & off Karnataka-Goa-Maharashtra coasts.

11th June: Gale wind speed reaching 135-145 kmph gusting to 160 kmph is likely to prevail over central & adjoining north Arabian Sea.

Squally weather with wind speed reaching 35-45 kmph gusting to 55 kmph is likely along & off Maharashtra-Gujarat coasts.

12th June: Gale wind speed reaching 130-140 kmph gusting to 155 kmph is likely to prevail over westcentral and adjoining northwest & eastcentral Arabian Sea.

Squally weather with wind speed reaching 35-45 kmph gusting to 55 kmph is likely along & off Maharashtra-Gujarat coasts.

(iii) Sea condition

8th June: Sea condition is likely to be phenomenal over central Arabian Sea and adjoining south Arabian Sea. Sea condition is likely to be rough along & off Karnataka-Goa-Maharashtra coasts.

9th June: Sea condition is likely to be phenomenal over central Arabian Sea. Sea condition is likely to be rough over adjoining areas of south Arabian Sea and along & off Karnataka-Goa-Maharashtra coasts.

10th June: Sea condition is likely to be phenomenal over central Arabian Sea. Sea condition is likely to be rough over adjoining areas of north Arabian Sea and along & off Karnataka-Goa-Maharashtra coasts.

11th June: Sea condition is likely to be phenomenal to very high over central & adjoining north Arabian Sea. Sea condition is likely to be rough to very rough over adjoining areas of northeast Arabian Sea and rough along & off Maharashtra-Gujarat coasts.

12th June: Sea condition is likely to be phenomenal over westcentral and adjoining northwest & eastcentral Arabian Sea. Sea condition is likely to be rough to very rough over adjoining areas of northeast Arabian Sea and rough along & off Maharashtra-Gujarat coasts.

(iv) Fishermen Warning (Graphics Attached)

- Total suspension of fishing operations over
 - eastcentral and adjoining westcentral & south Arabian Sea till 12th June.
 - westcentral and adjoining northwest Arabian Sea during 12-14th June
- Fishermen are advised not to venture into:
 - Central Arabian Sea till 13th June.
 - Adjoining areas of north Arabian Sea during 12th -13th June.

- Those out at sea are advised to return to coast.

The system is under continuous surveillance and the next message will be issued at 0530 hours IST of today, the 8th June, 2023.

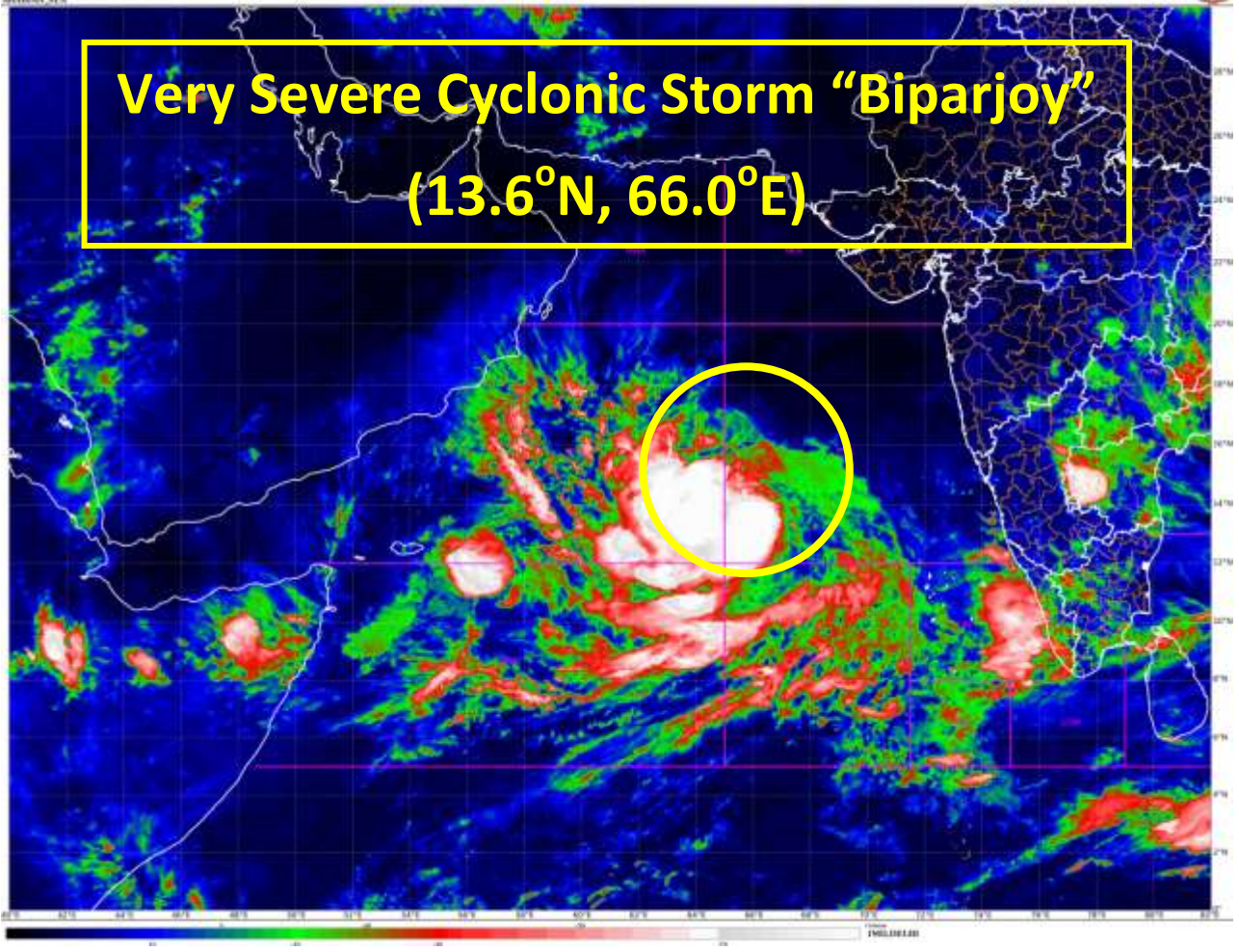
(Shashi Kant)
Scientist C, Cyclone Warning Division, New Delhi

Copy to: ACWC Kolkata/ ACWC Chennai/ CWC Bhubaneswar/CWCVisakhapatnam/CWC Ahmedabad/ MO Port Blair/MC Raipur/MC Bhopal/MC Hyderabad/RMC Nagpur

LEGEND: Heavy Rainfall: 64.5 to 115.5mm, **Very Heavy Rainfall:** 115.6 to 204.4mm **Most Places:** more than 76% of total stations, **Isolated Places:** Less than 25% of total

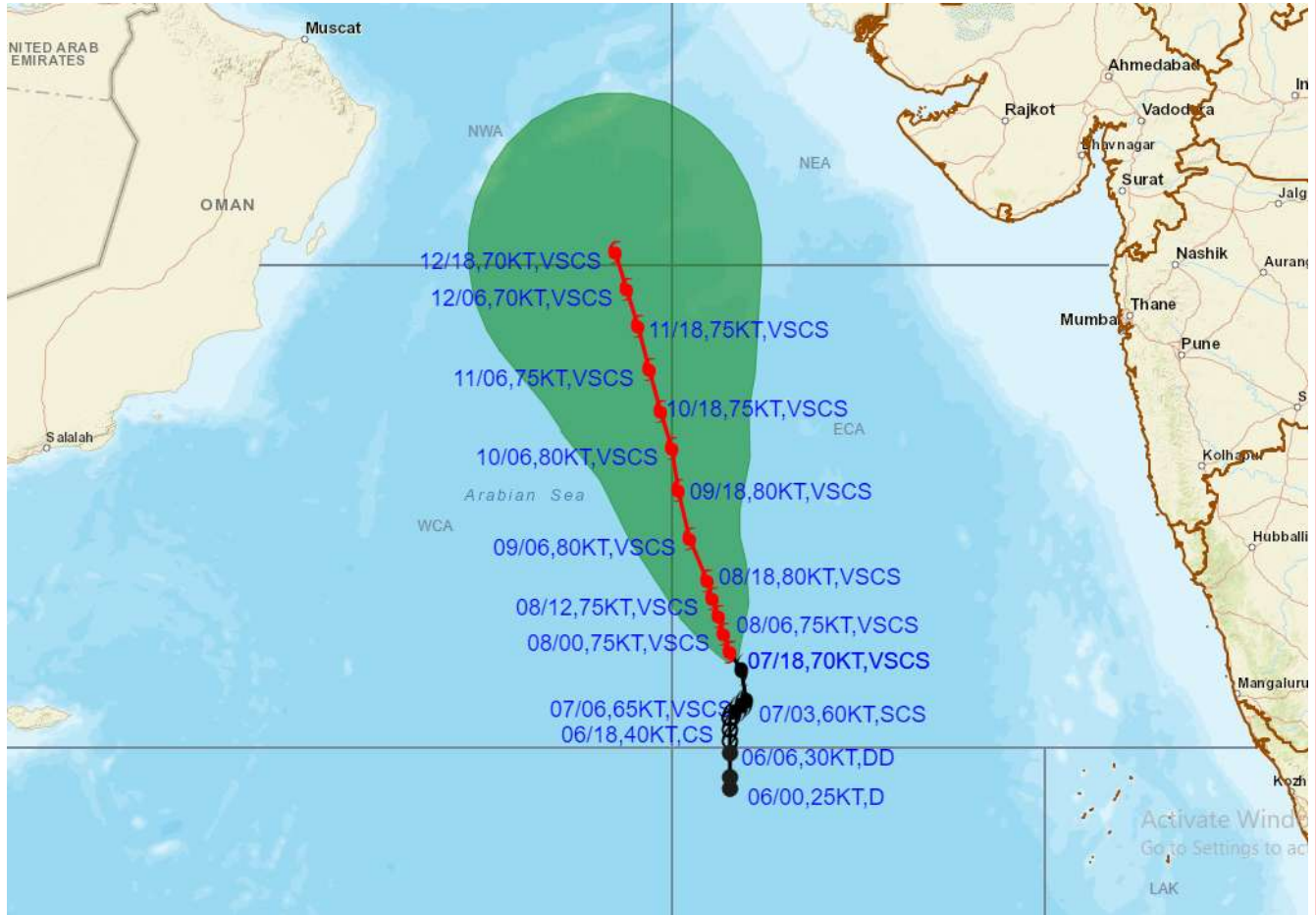


Very Severe Cyclonic Storm "Biparjoy"
(13.6°N, 66.0°E)





OBSERVED AND FORECAST TRACK ALONGWITH CONE OF UNCERTAINTY OF VERY SEVERE CYCLONIC STORM “BIPARJOY” OVER EASTCENTRAL ARABIAN SEA BASED ON 1800 UTC (2330 IST) OF 07TH JUNE 2023.



DATE/TIME IN UTC

IST=UTC + 0530

L: LOW PRESSURE AREA

WML: WELL MARKED LOW PRESSURE AREA

D: DEPRESSION (17-27 KT)

DD: DEEP DEPRESSION (28-33 KT)

CS: CYCLONIC STORM (34-47 KT)

SCS: SEVERE CYCLONIC STORM (48-63KT)

VSCS: VERY SEVERE CYCLONIC STORM (64-89 KT)

ESCS: EXTREMELY SEVERE CYCLONIC STORM (90-119 KT)

SuCS: SUPER CYCLONIC STORM (≥ 120 KT)

● LESS THAN 34 KT

☪ 34-47 KT

☪ ≥ 48 KT

■ OBSERVED TRACK

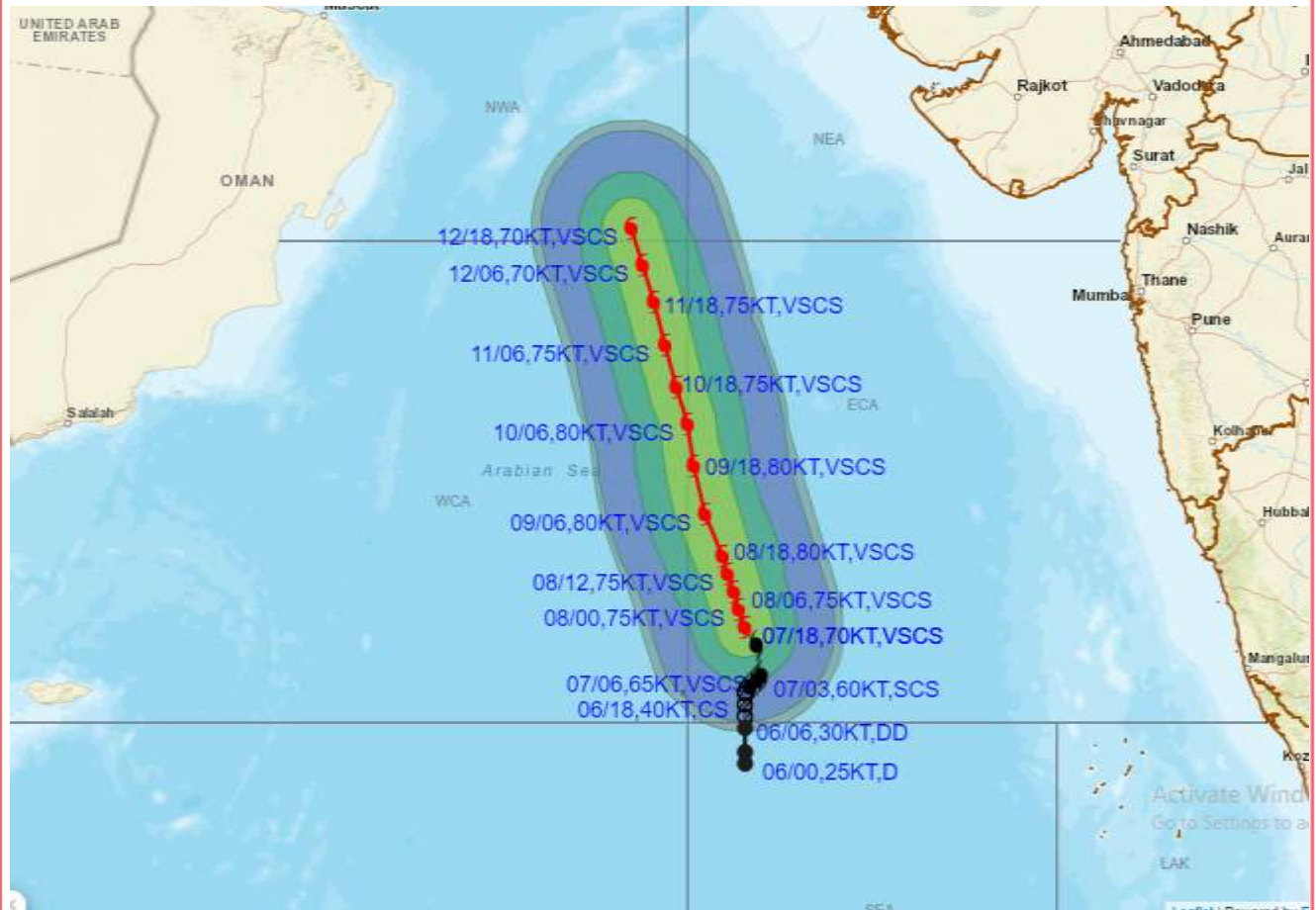
■ FORECAST TRACK

▲ CONE OF UNCERTAINTY

STATIONS	DISTANCE(KM) AND DIRECTION FROM STATIONS		
	08.06.23/1800	09.06.23/1800	10.06.23/1800
PORBANDAR	870, SSW	760, SW	680, SW
BOMBAY / COLABA	890, WSW	860, WSW	850, W
GOA/PANJIM	890, W	940, W	990, WNW
KARACHI AIRPORT	1130, S	980, SSW	840, SSW
MASIRAH	960, SE	810, SE	700, ESE



OBSERVED AND FORECAST TRACK ALONGWITH QUADRANT WIND DISTRIBUTION OF VERY SEVERE CYCLONIC STORM "BIPARJOY" OVER EASTCENTRAL ARABIAN SEA BASED ON 1800 UTC (2330 IST) OF 07TH JUNE 2023.



DATE/TIME IN UTC
 IST=UTC + 0530
 L: LOW PRESSURE AREA
 WML: WELL MARKED LOW PRESSURE AREA
 D: DEPRESSION (17-27 KT)
 DD: DEEP DEPRESSION (28-33 KT)
 CS: CYCLONIC STORM (34-47 KT)
 SCS: SEVERE CYCLONIC STORM (48-63KT)
 VSCS: VERY SEVERE CYCLONIC STORM (64-89 KT)
 ESCS: EXTREMELY SEVERE CYCLONIC STORM (90-119 KT)
 SuCS: SUPER CYCLONIC STORM (\geq 120 KT)

● LESS THAN 34 KT
 ○ 34-47 KT
 ● \geq 48 KT
 — OBSERVED TRACK
 — FORECAST TRACK
 — CONE OF UNCERTAINTY
 AREA OF MAXIMUM SUSTAINED WIND SPEED:
 ■ 28-33 KT (52-61 KMPH)
 ■ 34-49 KT (62-91 KMPH)
 ■ 50-63 KT (92-117 KMPH)
 ■ \geq 64 KT (\geq 118 KMPH)

IMPACT OVER THE SEA

MSW (knot/kmph)	Impact	Action
28-33 (52-61)	Very rough seas	Total suspension of fishing operations
34-49 (62-91)	High to very high seas	Total suspension of fishing operations
50-63 (92-117)	Very high seas	Total suspension of fishing operations
\geq 64 (\geq 118)	Phenomenal	Total suspension of fishing operations

Fishermen warning graphics

